

ANWA

by OMNIYAT

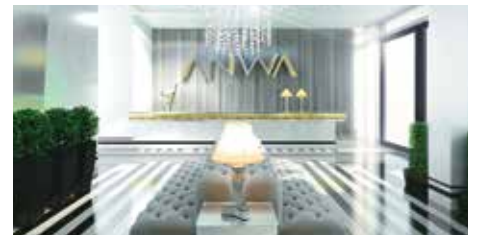


Bringing back the glamour and class of grand Transatlantic cruise voyages of the 20's, ANWA by Omniyat is Dubai Maritime City's foremost residential project. The lighthouse will stand tall as

a Dubai landmark, and welcome visitors who arrive from the sea. An icon in the making, ANWA will feature endless views of the ocean at every floor. Dressed to perfection, each apartment

will include open spaces to inspire ultimate elegance and breezy living.

At ANWA, the night will be yours.



FEATURES

- Located at the affluent residential strip of Dubai Maritime City
- Breathtaking views of Dubai and the Arabian Gulf from all floors
- Convenient access to Sheikh Zayed Road
- The most central location with fast access to Dubai International Airport, Deira, Bur Dubai, Jumeirah, Dubai International Financial Centre (DIFC), Trade Centre and Downtown Dubai

FACILITIES

- Swimming pool, gymnasium
- World-class spa
- Landscaped gardens



SERVICES

- 24 Hour Security
- Secure podium parking





by OMNIYAT

PROJECT FACT SHEET

PROJECT NAME	ANWA
LOCATION	Plot 08 B Dubai Maritime City Dubai, UAE
PROPOSED USE	Residential

UNIT MIX AND AREAS

TYPE	STOCK	GSA [Ave.]
Studio	28	469 sq. ft.
1BR	80	1,006 sq. ft.
2BR	82	1,422 sq. ft.
3BR	26	1,927 sq. ft.
4BR	1	XXXX sq. ft.
Duplex	4	XXXX sq. ft.
Penthouse	1	2,053 sq. ft.
Super Penthouse	1	4,086 sq. ft.
Subtotal	223	
Retail (Total area)		8,133 sq. ft.

FINISHES - PUBLIC AREAS (MIN. SPECIFICATION)

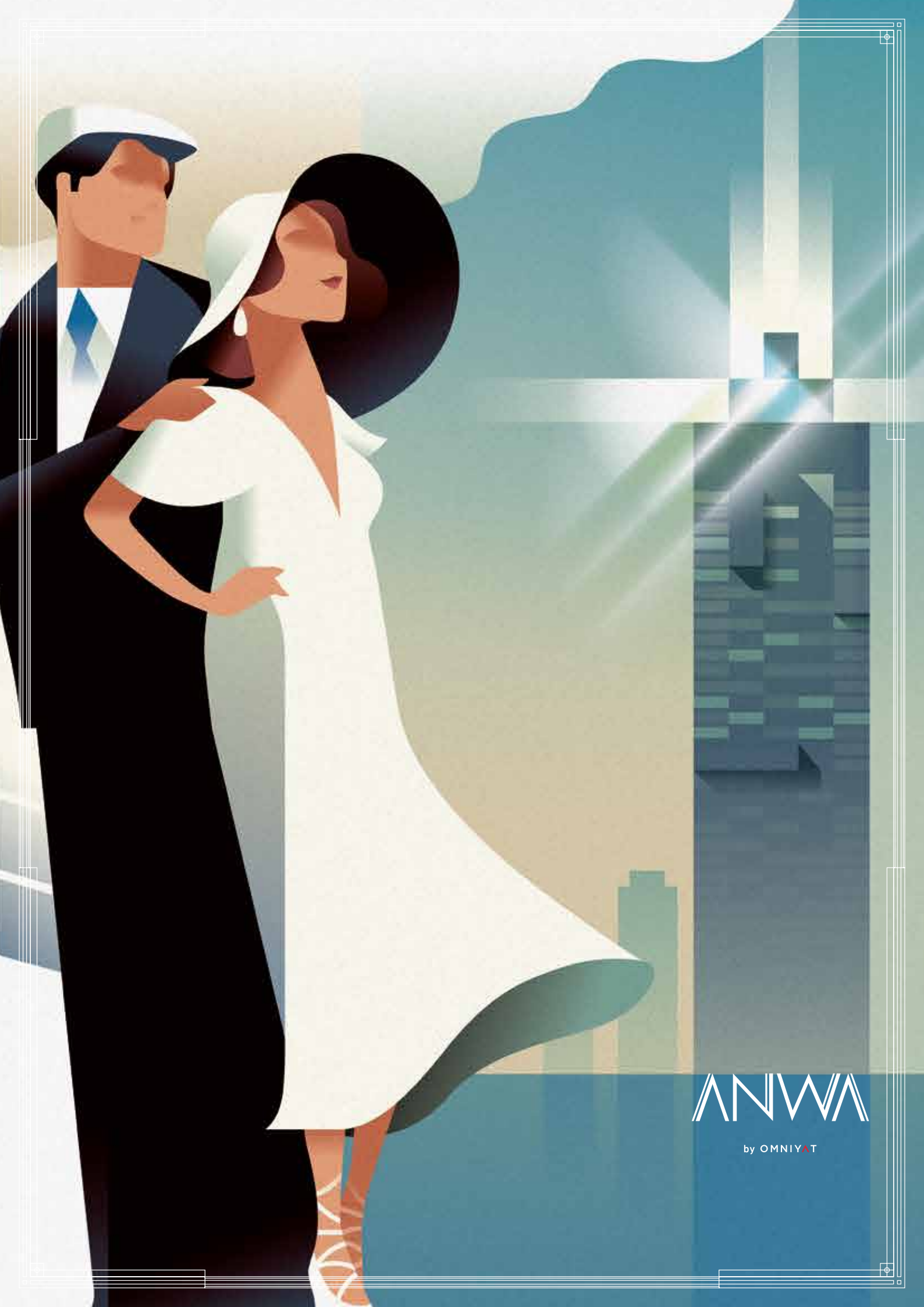
- Entrance Lobby and Corridors: stone floors; painted gypsum or feature timber walls and painted gypsum ceilings
- Landscaping: paving and planted areas

FINISHES - UNITS (MIN. SPECIFICATION)

- Kitchens: fully finished stone floor, painted gypsum bulkheads, gloss and veneered cabinets and stone bench tops. European appliances including built-in stove, oven, fridge and washing machine. Dishwashers to 2BR and 3BR units
- Bathrooms: fully finished stone floor and ceramic wall tiles with painted walls, painted plasterboard ceilings, veneered cabinets and solid surface vanity tops. Bagno Design sanitaryware
- Living Areas and Bedrooms: fully finished stone floor tiles, painted gypsum walls and ceilings
- Doors: Veneered MDF doors, timber door frames
- Windows: aluminium-framed double-glazed windows
- Light fixtures: down-lights in selected places

FURNISHED

No



ANWA

by OMNIYAT